



## INSTALLATION INSTRUCTIONS

**IMPORTANT SAFETY INSTRUCTIONS:** This equipment is intended to be installed by qualified personnel. The installation must be made in accordance with the current edition of the National Electric Code, and all applicable state and local building codes. The final installation must be approved by the appropriate, qualified, electrical/building inspector(s). Improper Installation may result in a risk of fire or electrical shock hazard. The instructions provided herein are made available for reference when installing the HBL GLOW RING. Refer to EQS3517 for HBL Luminaire Installation Instructions. If any portion of these installation instructions is unclear then do not proceed with the installation and contact an EYE Lighting Representative at **1-888-665-2677**.

CATALOG ITEM	Includes
HBL-GLOW RING	Four (4) Ball Chains (with Push Mount Sleeves attached at one end), and Six (6) additional Push Mount Sleeves.

## READ AND FOLLOW ALL SAFETY INSTRUCTIONS BEFORE STARTING INSTALLATION

### WARNINGS AND CAUTIONS:

- REFER TO EQS3517 FOR HBL LUMINAIRE INSTALLATION INSTRUCTIONS
- CAUTION – RISK OF SHOCK – DISCONNECT POWER BEFORE INSTALLATION OR SERVICING
- Luminaire installation and servicing shall be to all National, State, and Local Requirements at the time of installation, and must be performed by qualified personnel, using proper safety precautions. For safety, two or more people are recommended to perform installation.
- Wear proper safety equipment, glasses, and gloves, when installing or servicing luminaire.
- Failure to provide proper luminaire grounding may result in serious personal injury.
- Do not use in wet environment, or where humidity exceeds 85%.
- Suitable for operation in ambient temperatures ranging from -20°C to 45°C (60° may be acceptable for short durations).
- Do not use the luminaire to support ones weight. Do not hang onto luminaire.
- Mounting surface must be specified to properly support the weight of the luminaire
- Improper installation and/or utilization may void manufacturer’s warranty. Do not Detach the front cover. Tampering may void warranty.
- Use secondary safety chain or cable, as needed, when securing HBL.
- Allow sufficient cool down time prior to handling and/or servicing floodlight.



**DO NOT OPERATE  
IF CRACKED OR BROKEN**

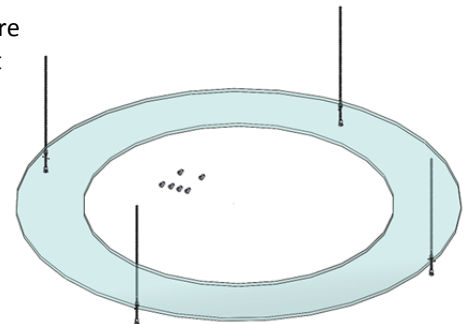


Fig 1. HBL-GLOWRING

**Tools required:** Installation is completed using ordinary tools including:

- Small Pliers

### Before Installation:

REMOVE all items from packaging and inspect for defects. If defects are noticed, do not install. Contact the EYE Lighting representative at 1-888-665-2677. Please follow local recycling codes when discarding packaging materials.

**EYE Lighting International of North America, Inc.**

*A Division of Iwasaki Electric of Japan*

9150 Hendricks Road  
Mentor, Ohio 44060

Tel: (440) 350-7000  
Fax: (440) 350-7001

www.eyelighting.com  
EQS4041 Rev. 1 11/30/16



## GLOWRING Installation:

- 1) HBL-GLOWRING
- 2) BALL CHAIN (4). See Fig 2.
- 3) PUSH MOUNT SLEEVE (10), (4 attached to Ball Chains, and 6 additional included). See Fig 2

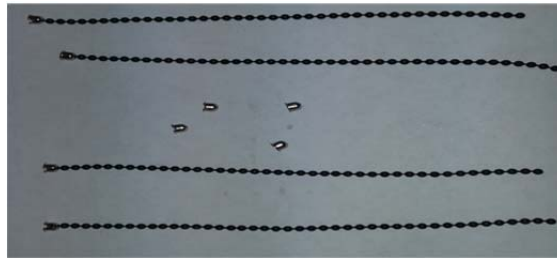


Fig 2

**NOTE:** The GLOWRING can be installed while the luminaire is already installed, but may be easier on a flat surface. Disconnect Power before installing.

1. Slip one of the Ball Chains through one of the slotted holes on the HBL Luminaire, just above the light emitting area. See Fig 3 and Fig 4.

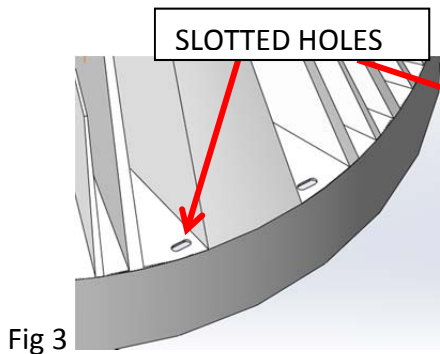


Fig 3

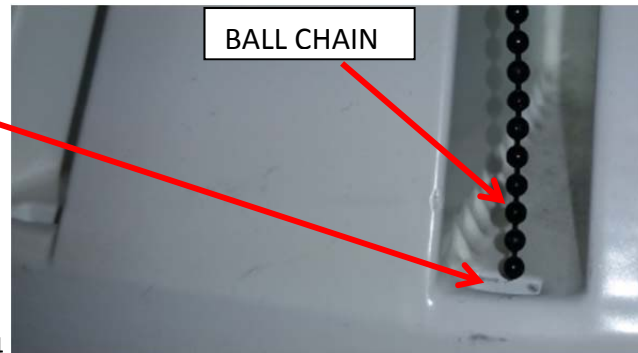


Fig 4

The Push Mount Sleeve attached to the end of the Ball Chain will prevent it from slipping completely through the slot. See Fig. 5

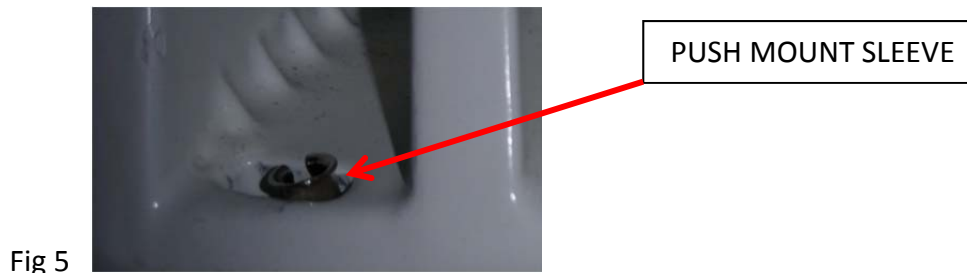


Fig 5

2. Repeat this process with the three remaining Ball Chains, in three additional slots at equal distances around the HBL Luminaire. NOTE: There are slots on either side of the wide feature on the luminaire. Use the slot to the same side of the wide features in each case.



# Lambda High Bay HBL-GLOWRING

3. Remove the Protective Film from the plastic GLOWRING.
4. Insert the end of one of the Ball Chains through the 1/8" hole in the RING. See Fig 6.  
**NOTE: The glossy side of the GLOWRING must face upwards, towards the luminaire.**

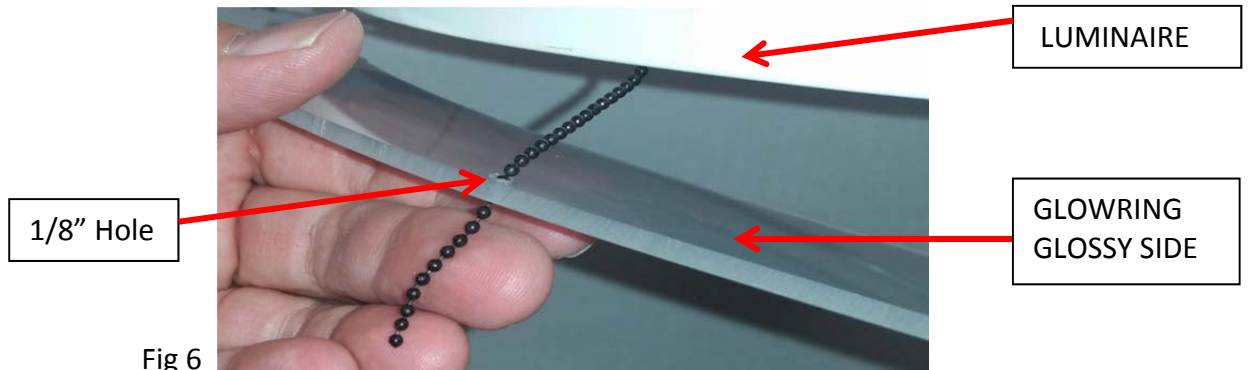


Fig 6

5. While holding the GLOWRING, and the Ball Chain, attach a second Push Mount Sleeve to that end of the Ball Chain. Small Pliers may help, since the Push Mount Sleeve is small and can be difficult to handle. (Extra Push Mount Sleeves are included in case some are damaged or lost). See Fig 7.



Fig 7

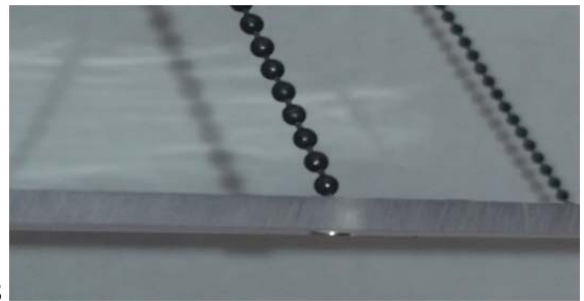


Fig 8

Repeat this process with the three other Ball Chains.

6. Gently pull the Ball Chains back up into the 1/8" hole, so that the Push Mount Sleeves are seated in the holes in the GLOWRING. See Fig 8

**The GLOWRING will now hang evenly, 3" below the light emitting surface of the HBL Luminaire.** See Fig 9



Fig 9

Refer to EQS3517 for HBL Luminaire Installation Instructions.

**\* Retain a copy of these instructions.\***

**EYE Lighting International of North America, Inc.**

*A Division of Iwasaki Electric of Japan*

9150 Hendricks Road  
Mentor, Ohio 44060

Tel: (440) 350-7000  
Fax: (440) 350-7001