

INSTALLATION INSTRUCTIONS

IMPORTANT SAFETY INSTRUCTIONS: This equipment is intended to be installed by qualified personnel. The installation must be made in accordance with the current edition of the National Electric Code, and all applicable state and local building codes. The final installation must be approved by the appropriate, qualified, electrical/building inspector(s). Improper Installation may result in a risk of fire or electrical shock hazard. The instructions provided herein are made available for reference when installing the GL-Series Luminaire. If any portion of these installation instructions is unclear then do not proceed with the installation and contact an EYE Lighting Representative at 1-888-665-2677.

Wattages	Input Voltage/Frequency	Weight
100W or 150W	120-277Vac / 50-60 Hz	22 lbs (9.98kg)

READ AND FOLLOW ALL SAFETY INSTRUCTIONS BEFORE STARTING INSTALLATION

WARNINGS AND CAUTIONS:

- **DANGER – RISK OF SHOCK – DISCONNECT POWER BEFORE INSTALLATION**
- Maintain minimum distance of 0.5 m (1.6 ft) from walls or any other flammable surface.
- Maintain minimum distance of 1.0 (3 ft) from lighted objects.
- **DO NOT** operate with cracked and/or broken lens/glass cover.
- **DO NOT** install close to a heat source.
- Mounting surface must be specified to properly support 50 lbs (22.67kg) per NEC. Do not use the luminaire to support ones weight, do not hang onto luminaire. Wear proper equipment, including safety glasses and gloves, when installing and servicing luminaire.
- Failure to provide proper luminaire grounding may result in serious personal injury.
- Improper installation and/or utilization may void manufacturer’s warranty.
- Allow sufficient cool down time prior to handling and/or servicing luminaire.
- **DO NOT** open the luminaire. There are no user serviceable parts inside.
DO NOT remove or tamper with the cable gland or plug. These have been supplied and installed to the luminaire accordance with the manufacturer’s instructions. Any tampering may void the manufacturer warranty.
- SUITABLE FOR MOUNTING WITHIN 4 ft (1.2 m) OF THE GROUND



DO NOT OPERATE IF CRACKED OR BROKEN

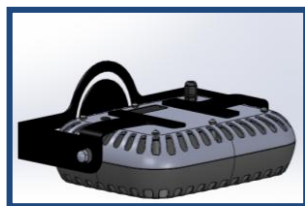
NOTE:

- **Inspect luminaire for defects prior to installation. It is unlikely that hardware or covers have loosened during shipment. If defects are noticed, DO NOT install the luminaire and contact EYE Lighting at 1-888-665-2677.**

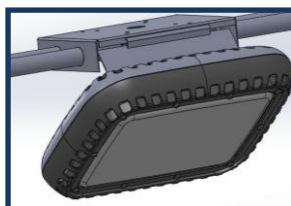
TOOLS REQUIRED:

Installation is completed using ordinary tools including:

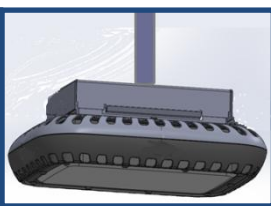
- 1) Crescent wrench 2) Torque wrench capable 10 Nm 3) Wire Strippers



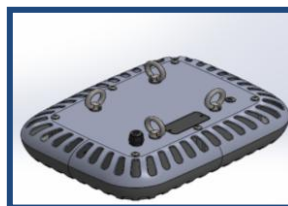
Yoke Mount



Surface Mount



Pendant Mount



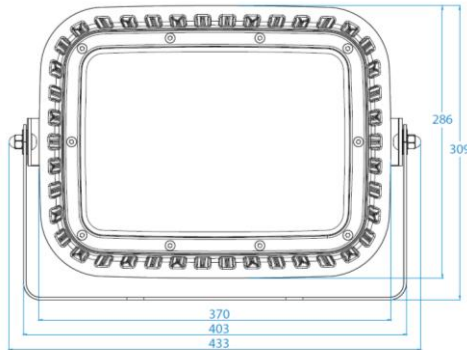
Chain Mount

INSTALLING LUMINAIRE

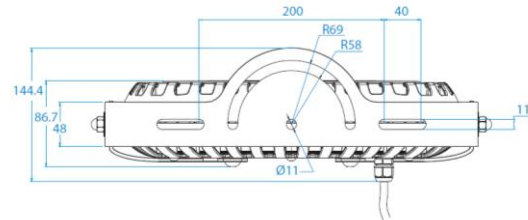
Disconnect mains voltage supply prior to installation.

YOKE MOUNT INSTRUCTIONS

This Luminaire is "Suitable for mounting within 4 ft (1.2 m) of the ground". With this Yoke mount, the luminaire is suitable for wall mounting, ceiling mounting and steel frame mounting, each also have an adjustable projection angling.



Unit: mm



1

Suggest mounting instruction:

Fix mounting type:
Place 2 M10 bolt at the slots.
Distance between central of the slots is between 200 to 280 mm.
(7 7/8 to 11 1/32 in).

Adjustable angle:
Center slot ① of the yoke mount bracket is fixed with one M10 bolt, adjust to desired angle, then fix the bracket with another M10 bolt at the semi-circle groove ②

2

Luminaire projecting angle is adjustable.

Please connect the luminaire AC cord to a UL certified junction box. (Junction should be prepared by user)

Loosen M10 bolt, and adjust the mounting barcket to the right / indicated angle.

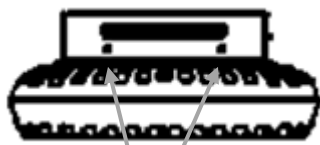
SURFACE / PENDANT MOUNT INSTRUCTIONS

Suitable for concrete ceiling and steel frame mounting. Install in accordance with the application installation code by a person familiar with the construction and operation of the product and the hazards involved.

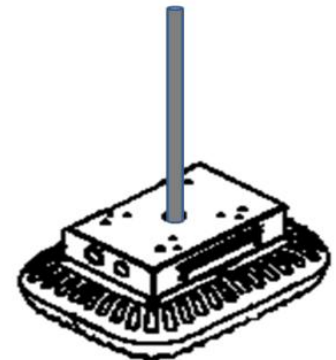
(Fastening Hardware and Pendant Arms are NOT included with luminaire and shall be provided by installer or other suppliers).



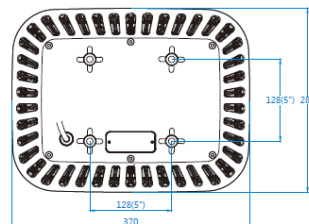
1. Use top opening of surface mount for pendant arm assembly or knock outs as needed for conduits and wire connections.
2. Disengage the top piece of the surface mount assembly from the base attached to the luminaire.
3. For surface mount or pendant arm match up mounting holes of the top piece to a junction box or ceiling surface as needed using appropriate fasteners and secure into position.
4. Align and re-attach the mounting box base to the top piece at the hinge flange.
5. To open the surface mounting box and connect wiring, shift the base of the luminaire to open at the hinge and allow the luminaire to hang, providing access to the wiring compartment.
6. Complete wiring as described in **ELECTRICAL CONNECTIONS** section of installation instructions.
7. Close compartment by matching up to top piece and secure with set screws.
8. Remove protective film from glass.



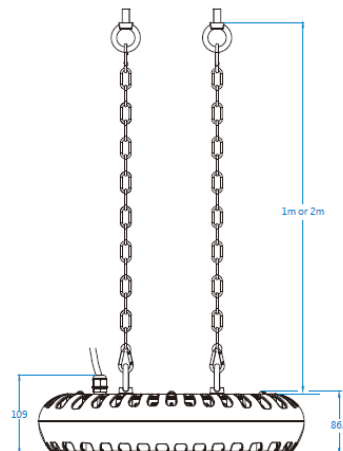
set screws



CHAIN MOUNT Suitable for concrete ceiling and steel frame mounting.
(Eye Bolts included. Chain provided by other suppliers).

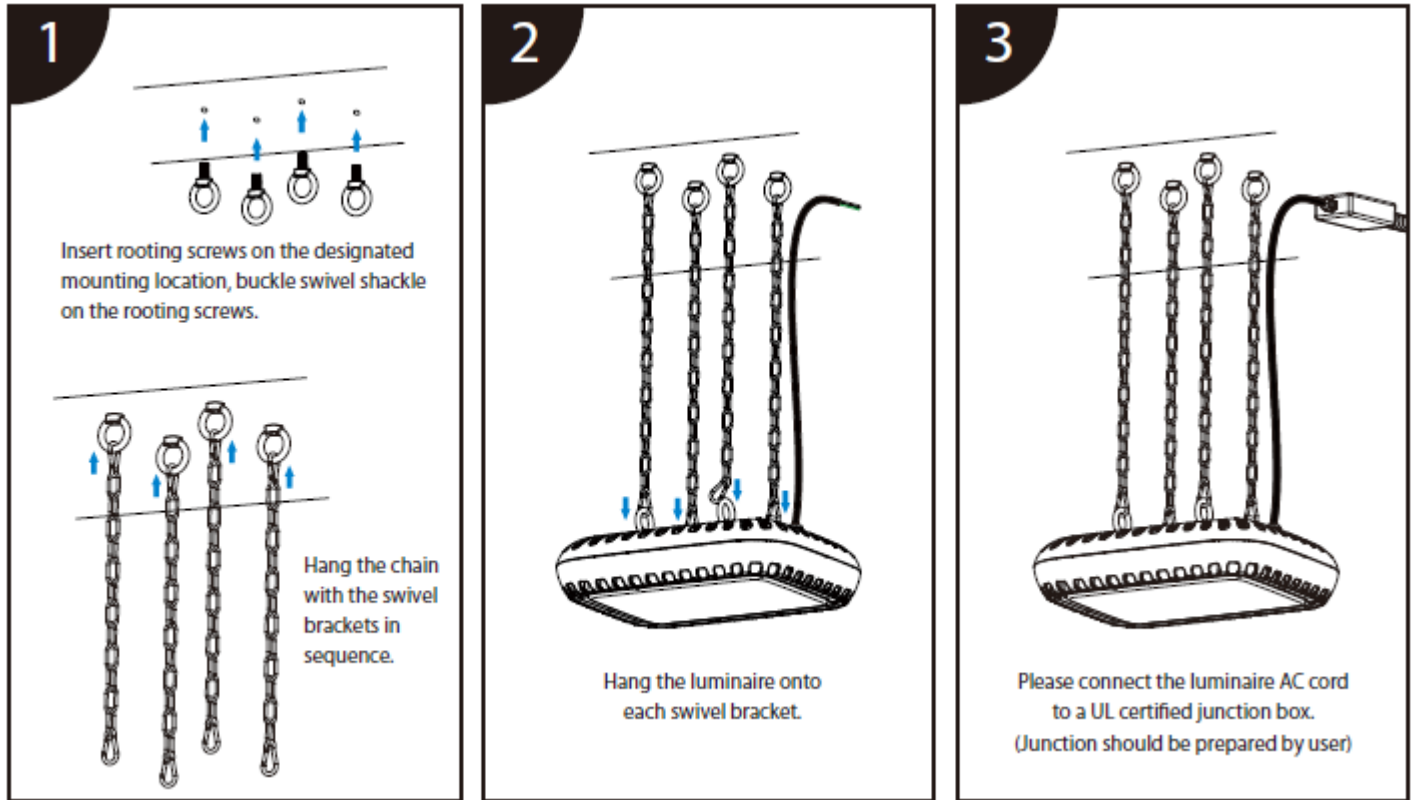


Unit: mm





CAUTION: The CHAIN shall be sized to support a minimum of three (3) times the weight of the luminaire. Failure to provide a strong enough chain will not provide the correct ceiling mounting safety required and defined by EYE Lighting.



ELECTRICAL CONNECTION

****DISCONNECT POWER BEFORE INSTALLATION AND/OR SERVICING****



Connect the luminaire AC cord to a UL listed junction box with UL listed wire nuts on terminal block per the following:

- Black wire: Line (ACL)
- White wire: Neutral wire (ACN)
- Green wire: Earth/Safety ground

Should the luminaire enclosure be damaged, do not install, the equipment should be returned to EYE Lighting for inspection/repair.

- Modifications to the device or changes of its design are not permitted.
- The equipment must be operated according to the intended purpose in an undamaged condition.

EYE Lighting will not be responsible for claims arising from improper or careless installation or handling of luminaires.